

**P 型 / P Core**

型号 TYPE	图例 FIG.	尺寸 Dimensions ( mm )						
		A	B	C	D	E	F	G
P7.3/4.1C	6	7.35±0.15/-0.2	2.1+0.04/-0.1		3+0.05/-0.1	5.65min	1.35min	1min
P9/5B	7	9.15±0.15	2.65±0.1	5.65±0.15	3.8±0.1	7.5min	1.8min	
P11/7C	7	11.1±0.2	3.3±0.1	6.8±0.25	4.6±0.1	9.2±0.2	2.3±0.15	
P14/8	2	14.0±0.3	4.2±0.2		5.9±0.2	11.8±0.4	3.1±0.2	2.9±0.3
P18/11	7	18.4+0/-0.8	5.35±0.15		7.6+0/-0.3	14.9min	3.6+0.4/-0	
P21.6/13.4	2	21.59±0.41	6.71±0.13	14.99±0.41	13.51±0.2	18.29±0.38	4.83±0.15	9.53±0.2
P21.6/13.4B	2	21.6±0.4	6.7±0.1	14.9±1.6	9.25±0.15	18.2±0.4	4.7±0.15	4.55±0.15
P21.6/8.2/15.2	3	21.6±0.4	4.1±0.25	15.2±0.25	9.4±0.2	17.5±0.3	2.35±0.15	
P23/11A	3	22.7±0.45	5.53±0.15	15.24±0.2	9.7±0.2	18.3±0.4	3.85±0.2	
P23/18F	3	23.3+0/-0.9	9.15±0.1	15.25±0.35	9.9+0/-0.4	18min	7+0.3/-0	
P26/16D	2	25.5±0.5	8.05±0.1	17.2±0.5	11.1±0.3	21.6±0.4	5.65±0.15	5.4±0.25
P30/12.8A	3	30±0.5	6.4±0.1	20.3±0.25	12.4±0.2	24.6±0.5	3.7±0.15	16.8min
P30/16.1/20.3A	3	30±0.5	8.05±0.15	20.3±0.3	13.3±0.2	24.6min	5.25±0.15	
P30/18.8/20.3B	4	30±0.5	9.4±0.2	20.25±0.35	13.3±0.2	24.6min	6.6±0.2	17.5min
P30/19AE	3	30±0.4	9.5±0.1	20.3±0.25	12.4±0.2	24.6±0.4	6.6+0.15/-0.1	16.8min
P30/19AK	2	30±0.5	9.4±0.2		13.3±0.2	24.5min	6.65±0.25	
P30/19AT	3	30±0.5	9.4±0.2	20.25±0.35	13.2±0.2	25min	6.6±0.2	17.6min
P30/19Y	3	30.0±0.5	9.4±0.2	20.25±0.35	13.2±0.2	24.6min	6.6±0.2	
P30/9.8A	3	30±0.5	4.9±0.1	20.25±0.35	13.3±0.2	24.6min	2.1±0.2	
P30.4/19.4/20.3	3	30.4±0.6	9.7±0.25	20.3±0.3	13.3±0.3	24.8min	6.6±0.25	
P31.5/12.6/20.4	3	31.5±0.5	6.3±0.15	20.4±0.3	13.2±0.2	26min	3.8±0.2	19min

H	C1	Ae	Le	Amin	Ve	AL(±25%)				重量 g / PRS
						TP4	TP4A	TP4W	TPW33	
1.45min	1.40	7.05	9.84	5.80	69.40	640	650	700	730	0.52
2.1±0.3	1.20	11.23	13.50	8.95	151.60	870	890	970	1000	0.90
2.2±0.3	0.95	17.25	16.45	14.45	283.80	1200	1300	1400	1500	1.47
3.3±0.6	0.79	25.10	19.80	19.80	495	1500	1600	1800	1900	2.60
	0.60	43.30	25.80	36.00	1120	2400	2500	2900	3000	5.81
5.02±0.41	0.40	71.27	28.73	72.02	2047.8	4600	4700	5400	5700	11.00
3.7±0.7	0.48	64.80	31.20	51.00	2000	3100	3200	3600	3800	12.60
	0.38	64.28	24.60	60.54	1581.2	4200	4400	5000	5200	5.60
	0.45	68.80	31.20	62.80	2144	3800	3900	4500	4700	11.13
	0.59	74.29	43.50	67.42	3231.6	3200	3300	3900	4100	16.77
4.15±0.5	0.44	86.67	38.16	73.87	3307.1	3900	4000	4700	5000	21.50
	0.31	120.76	37.17	112.97	4488.4	6100	6300	7300	7700	23.29
	0.34	126.64	43.20	109.70	5470.5	5300	5500	6400	6800	28.39
	0.38	127.80	48.10	111.70	6147.3	5000	5100	6000	6500	31.90
2.9±0.15	0.39	125.46	48.34	116.38	6065.1	5200	5300	6300	6700	31.47
	0.35	128.32	44.89	114.74	5758.7	5400	5600	6500	6900	29.88
	0.39	122.80	48.37	102.31	5940.3	4500	4700	5500	5900	30.83
	0.38	127.01	48.17	111.70	6118.2	5000	5100	6000	6400	31.75
	0.25	126.07	31.77	111.70	4005.5	6700	6900	7900	8400	20.00
	0.37	133.74	49.1	113.90	6567	5000	5200	6100	6500	34.08
2.5±0.15	0.33	116.61	38.16	113.31	4449.5	6000	6200	7200	7600	23.09

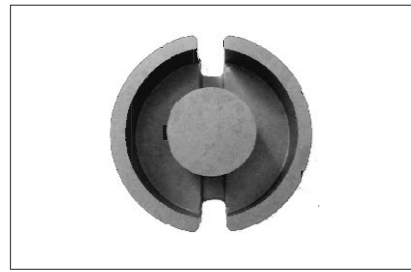


FIG.2

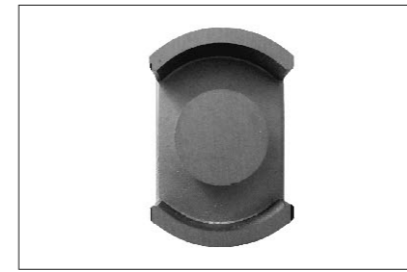
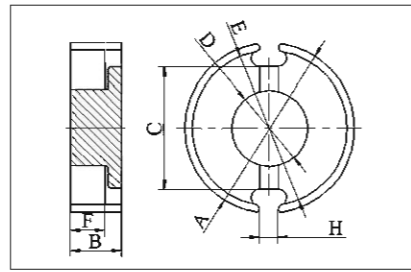
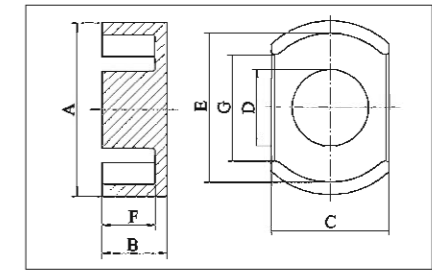


FIG.3



**P 型 / P Core**

型号 TYPE	图例 FIG.	尺寸 Dimensions ( mm )						
		A	B	C	D	E	F	G
P33.2/18.9/23.7C	3	33.2±0.5	9.45±0.1	23.7±0.3	13.5±0.2	26.6±0.4	6.45+0.2/-0.1	19.5±0.5
P33.2/19E	3	33.2±0.5	9.4±0.15	23.7±0.3	13.5±0.2	26.6±0.4	6.7±0.15	18.35±0.4
P33.3/18A	3	33.3±0.4	9.2±0.1	24±0.3	13.8±0.2	26.8±0.4	6.2±0.1	17.2min
P33.5/12.6/24A	3	33.5±0.4	6.3±0.2	24±0.3	13.8±0.25	26.8min	3.55±0.2	17.2min
P33.5/12S	3	33.5±0.4	6.1±0.2	24±0.3	13.85±0.25	27.2min	3.35±0.2	
P33.5/13.1/24	3	33.5±0.4	9.5±0.15	24±0.3	13.85±0.25	26.7min	6.5±0.15	
P33.5/13.3/24A	3	33.5±0.4	9.7±0.2	24±0.3	13.85±0.25	26.5min	6.75±0.25	17.2min
P33.5/13.6A	3	33.5±0.4	6.8±0.2	24±0.3	13.8±0.2	26.8min	3.9±0.2	
P33.5/13.9/24B	3	33.5±0.4	6.95±0.2	24±0.3	13.8±0.1/-0.2	27.5±0.4	3.95±0.2	18.2min
P33.5/13/24A	3	33.5±0.3/-0.5	6.5±0.1	24±0.3	13.85±0.25	26.8min		17min
P33.5/14C	3	33.5±0.4	7.15±0.2	24±0.3	13.8±0.2	26.8min	4.15±0.2	17.2min
P33.5/16.2/24A	3	33.5±0.3	8.1±0.2	24±0.3	13.85±0.25	26.8min	5.1±0.2	18.5min
P33.5/19L	3	33.5±0.4	9.7±0.2	24.0±0.3	13.8±0.2	26.8min	6.7±0.25	17.2min
P33.5/19S	3	33.5±0.4	9.7±0.1	24.0±0.3	13.8±0.2	26.8min	6.7±0.2/-0.1	17.3min
P33.5/25D	3	33.5±0.3/-0.5	12.5±0.1	24.0±0.3	13.85±0.25	27±0.3/-0.5	9.5±0.1	17min
P33.5/28/24A	3	33.5±0.5	14±0.1	24±0.45	13.7±0.25	26.8min	11±0.15	17min
P35/22C	2	35.6±0.6	10.9±0.2	26.2±0.6	15.9±0.3	29.5min	7.6±0.3	5.45±0.25
P36/22G	2	36±0/-1	10.7±0.4/-0	26.2±1	16±0/-1	29.5±1.8/-0	7.8±0.3/-0	5.4±0.4
P36/22A	2	36.2±0/-1.2	10.9±0.2	26.2±0.6	16.2±0/-0.6	29.8min	7.55±0.25	
P39.8/13/28.3	3	39.8±0.7	6.5±0.2	28.3±0.35	16±0.25	33.2±0.7	3.5±0.2	
P39.8/15/28.3	3	39.8±0.5	7.5±0.15	28.3±0.35	16±0.25	33.2±0.5	4.55±0.2	21.8min

C1	Ae	Le	Amin	Ve	AL(±25%)				重量 g /PRS
					TP4	TP4A	TP4W	TPW33	
0.32	154.72	48.85	134.13	7557.5	5900	6100	7200	7700	39.22
0.33	148.56	48.82	128.82	7252.7	5700	5900	6900	7400	37.64
0.30	160.12	48.07	139.82	7697	6200	6500	7600	8100	39.94
0.26	149.45	38.23	134.40	5714.1	7100	7300	8500	9000	29.65
0.26	146.89	38.00	134.40	5582	7100	7300	8500	9100	28.97
0.23	167.24	38.28	147.12	6401.4	7800	8000	9300	9900	33.22
0.25	158.84	38.93	140.05	6184	7300	7500	8800	9300	30.00
0.26	153.86	40.04	137.65	6161	7000	7300	8500	9000	31.97
0.26	154.97	40.74	139.04	6312.9	7000	7200	8400	9000	32.76
0.25	157.34	38.76	140.59	6097.9	7400	7600	8800	9400	31.65
0.26	157.49	41.08	139.82	6469.8	7000	7200	8400	9000	33.58
0.28	158.56	44.51	140.59	7057.7	6700	6900	8000	8600	36.63
0.39	150.25	57.80		8684.93	5800	6000	7100	7700	45.07
0.32	158.67	50.37	139.82	7992.7	6000	6200	7380	7800	41.48
0.37	167.29	61.08	147.15	10218.6	5500	5600	6700	7200	53.03
0.42	160.15	66.58	140.59	10662.8	4900	5000	6000	6500	55.33
0.28	186.66	53.00	164.84	9892.4	6800	7100	8300	8900	51.34
0.31	173.81	54.00	143.65	9385.2	5900	6100	7200	7700	48.70
	190.67	52.06	167.34	9925.5	7000	7300	8600	9200	51.51
0.23	187.46	43.22	175.93	8101.3	8500	8800	10300	11000	42.04
0.25	187.00	47.00	174.67	8749	8000	8200	9600	10300	45.40

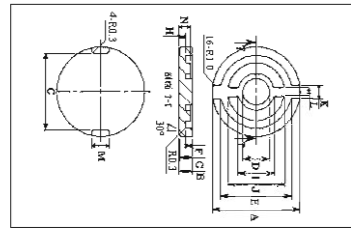
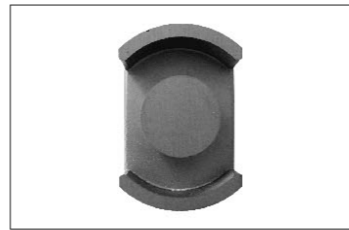
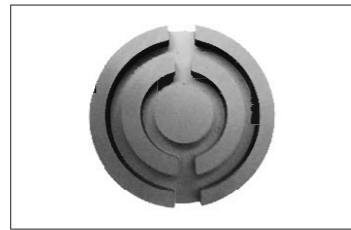


FIG.1

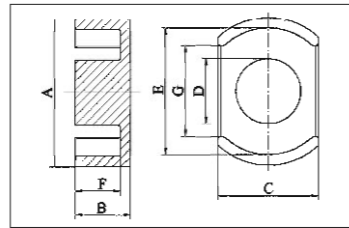


FIG.3

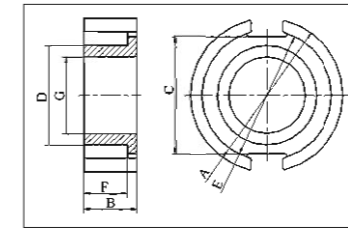
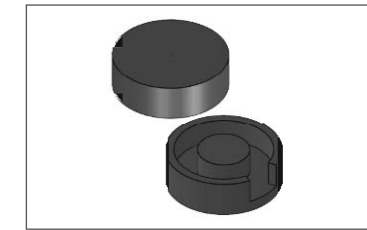


FIG.5

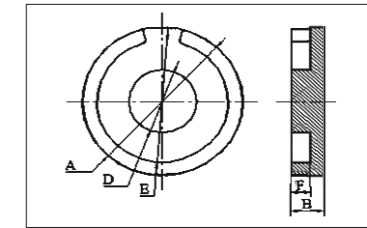


FIG.8

P型 / P Core

型号 TYPE	图例 FIG.	尺寸 Dimensions ( mm )						
		A	B	C	D	E	F	G
P39.8/25.2/28.3	3	39.8±0.7	12.6±0.15	28.3±0.4	16±0.3	33.3±0.7	9.05±0.2	
P40/13D	3	39.8±0.5	6.75±0.1	28.3±0.35	16±0.35	33.2±0.5	4.35±0.15	20min
P40/17.8	3	39.8±0.5	8.9±0.1	28.3±0.35	16±0.25	33.2±0.5	5.9±0.15	20min
P40/21B	3	39.8±0.7	10.3±0.2	28.3±0.5	16±0.25	32.7min	6.6±0.2	20min
P40/22.2/28.4	3	39.8+0.7/-0.4	13.45±0.1	28.3+0.5/-0.4	16±0.3	33min	9.85±0.15	
P40/10	8	40±0.5	5+0/-0.2		17.7±0.4	35.4±0.4	3±0.2	
P40/13G	3	40±0.5	6.6±0.2	28.3±0.35	16±0.25	33±0.5	3.6±0.2	
P40/25A	3	40.0±0.5	12.7±0.15	28.3±0.4	16.0±0.3	33.3±0.5	9.15±0.2	
P40/26A	3	40.0±0.5	13.2±0.2	28.3±0.4	16.0±0.3	33.3±0.5	9.7±0.2	
P40/27	3	40.0±0.5	13.5±0.2	28.3±0.4	16.0±0.3	33.3±0.5	9.9±0.2	
P40/25F	3	40.3±0.6	12.7±0.15	28.4±0.4	16.1±0.3	33.3min	9.15±0.2	20.5min
P51/35A	5	50.8±1	17.8+0/-0.5	39±1	33±1	43.2+1/-0.5	14.5±0.5	25.5+0.2/-0.3
P57/17A	1	57±1	8.5±0.15		18±0.35	47.2±0.95	5±0.2	

C1	Ae	Le	Amin	Ve	AL(±25%)				重量 g /PRS
					TP4	TP4A	TP4W	TPW33	
0.31	209.32	65.24	189.75	13655	6700	6900	8200	8900	70.86
0.27	161.45	43.55	160.85	7030.8	7700	8000	9300	10000	36.49
0.27	191.02	51.78	175.93	9891.8	7400	7700	9100	9700	51.33
0.27	211.71	56.62	193.52	11987.7	7600	7900	9400	10000	62.21
0.28	209.67	59.70	191.01	12517.5	7200	7500	8900	9500	64.96
0.23	159.82	35.96	105.65	5747.4	5800	6000	6900	7400	29.83
0.23	189.55	43.27	175.93	8201.3	8500	8800	10300	10900	42.56
0.31	210.69	65.52	189.75	13803.6	6700	6900	8200	8800	71.63
0.32	209.70	67.40	188.50	14137.7	6500	6700	8000	8600	73.37
0.39	198.38	77.69		15411.75	6100	6300	7500	8100	79.98
0.31	209.25	66.15	191.57	13841.7	6700	6900	8200	8900	71.83
0.22	353.68	76.28	316.20	26976.9	9800	10200	12200	13100	140.00
			254.47						